



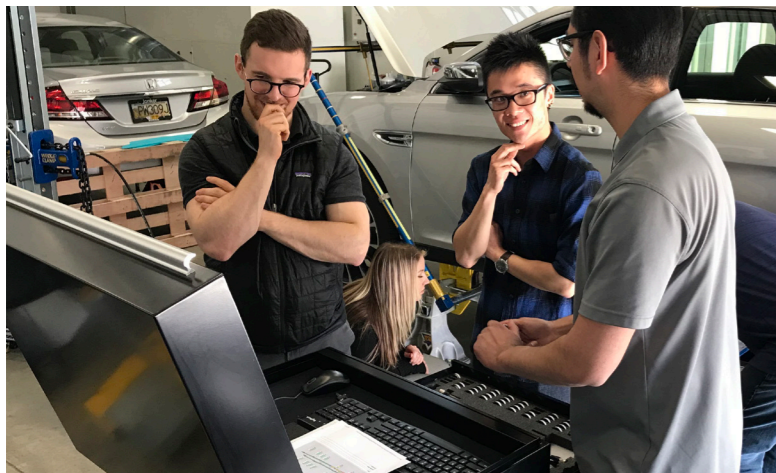
Support

The **Eclipse Plus** Tech Link immediately connects your repair center to an on-line measurement support expert to troubleshoot, train or provide the technical support your repair team needs.

- On-Site or On-Line Training
- Certified and Trained Distributors
- Training Center
- On-Line Help
- On-Line Training videos

With built in wireless connectivity **Eclipse Plus** can be quickly connected to the Internet for all on-line support. Off-line with no connection? No problem. Many of the resources for tech support are built right into the system help menus.

“I can use this system anywhere in the shop, on a rack, the floor and on my two post lift. The car does not have to be level and the numbers are always the same. The 30' range of **Eclipse Plus** is incredible! 360 degrees of measurement with no blind spots lets me position it wherever I want. It is so assuring to know that the laser is checking it's calibration continually during use. Our techs were using the laser to measure in less than an hour after pulling it out of the shipping box.”



ECLIPSE PLUS



305-793-9503
Free Consultation

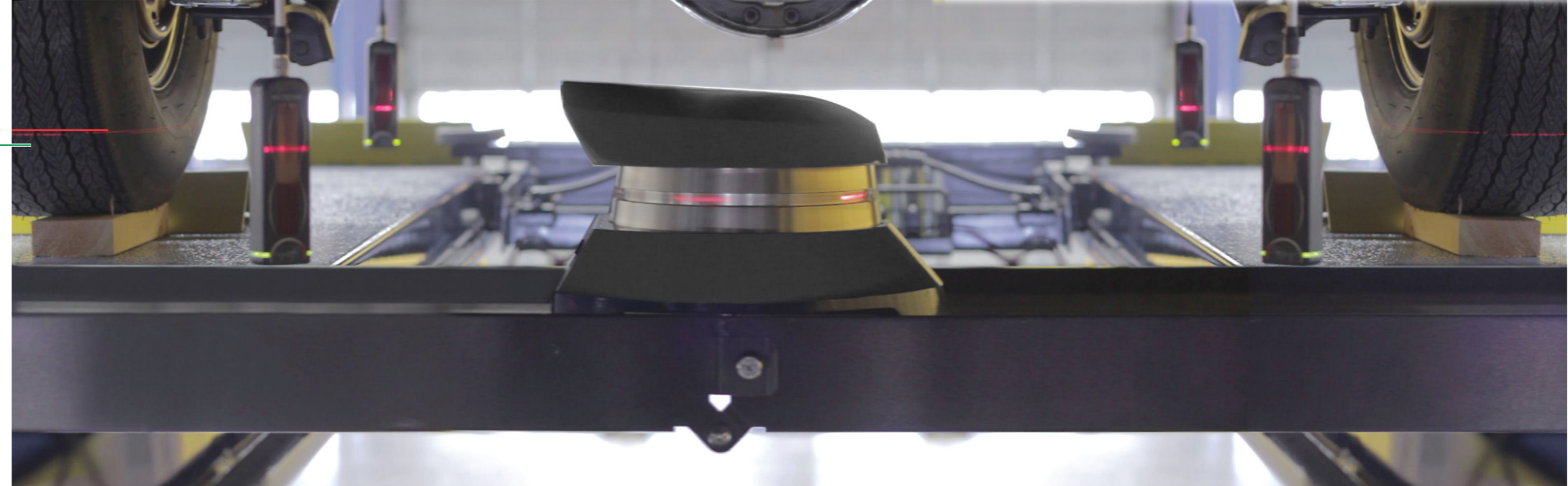
Faster. Smarter. Better.

measure at the speed of light



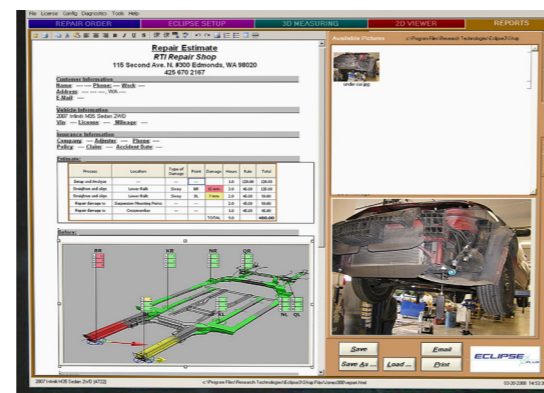
Eclipse Plus provides fast, accurate measurements for estimating, blueprinting and repair on any surface from lifts to benches. It's collision repair console shows a realtime visual display of the structural damage in an easy to understand, full-color, 3D graphic model. The easy to use **Eclipse Plus** software reduces cycle time and expense, while supporting profitable estimates and reports.

- Full 360 degree measurement with no dead spots.
- 30 foot overall range (more than twice the length of competitive systems).
- Continuous calibration—the only system to provide automated calibration!
- Dual axis tilt sensor—an industry first compensates for vehicle and laser tilt, making it perfect for use on any lift or frame machine.
- Compact, modular design minimizes any target blockage.
- Smart targets act like miniature GPS sensors for precise position information.
- Quick-change modular stems automatically change height reading.
- Multi-point measuring continuously monitors and updates all dimensional changes.
- Color LEDs on targets show damage at the point of measurement.
- Modular magnetic adapters span a wide variety of sizes in a compact, efficient form.
- Aluminum compatible Uni-fits are a standard adapter.
- Underhood measurement—simultaneously measure multiple points on the upper body.



Estimate

Estimating is only as accurate as the measuring system. **Eclipse Plus** clearly identifies primary and secondary damage on the floor or a two-post lift. It utilizes the color coded 3D virtual frame to rapidly develop repair plans, report to the insurance company and improve work flow efficiency by identifying all of the damage prior to repair.



Repair

The **Eclipse Plus** software uses clear, 3D color images of the vehicle frame to provide effortless navigation for a faster set-up and measurement. The simultaneous multi-point measurement continuously monitors and updates all the dimensional changes as they occur. Full-color LEDs on the targets and at the repair console immediately alert you to measurement changes. Zones of high damage are indicated in red, medium in yellow and points in-spec are green. Crystal clear information for shop, client and insurance company.

Targets

Highly visible LED displays on each smart target mirror the 3D colors from the measurement console. The amount of damage is illustrated in red, yellow or green for length width and height readings.



Clearly see the structural adjustment required at every target location while you pull—without returning to the console!

Eclipse Plus is reliable, easy to use and streamlines the measurement process. It provides superior readings, supporting repair and system certification with indisputable documentation.



Side Body Adapter Kit

Eclipse Plus Side Body Adapter Kit allows users to make a custom point with comparative measurements.

Reports

We provide the best measurement reports in the industry. A colored, 3D virtual frame provides an intuitive picture of the vehicles structural damage. The powerful estimating tool captures all the details needed for a complete analysis. **Eclipse Plus** generates an accurate, full color repair document within minutes! This report can be printed or emailed directly from the work station.

